



- Horn: Omnidirectional/max. 110 dB(A)
- Type of protection: Ex d
- Class: IP66/67 (IEC 60529/NEMA 4X)
- Corrosion-resistant GRP enclosure
- Mounting bracket included
- 32 standardised preconfigured signal sounds (PFEER/UKOOA compatible)
- Individual signal sounds can be chosen (2 for AC versions, 3 for DC versions)
- Signal sound reduction up to 18 dB(A) adjustable
- Telephone system connection/line monitoring optionally available to order

WebCode **YA6SA**



**Product series YA6S** is designed to provide an audible alarm which can be used to alert, warn or draw attention to machine malfunction/start up or any number of safety related issues. Corrosion resistance is a key feature of the device which is ideally suited for applications in the harshest of environments both onshore and offshore.

	IECEX / ATEX					
Zone	0	1	2	20	21	22
Installation in		•	•		•	•

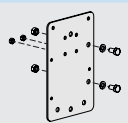
Selection Table-							
Rated operational voltage DC		2					
	Rated operational current	Rated operational current	Rated operational voltage AC	Rated operational voltage DC	Product Type	Art. No.	Weight kg
	0.04 A (T6)	0.04 A (T6)	230 V	-	YA6S/C-N-EN-SF-A-ST-00-00-00	225185	3.640
	0.076 A (T6)	0.076 A (T6)	115 V	-	YA6S/C-L-EN-SF-A-ST-00-00-00	225184	3.640
Rated operational voltage DC		3					
	Rated operational current	Rated operational current	Rated operational voltage AC	Rated operational voltage DC	Product Type	Art. No.	Weight kg
	0.25 A (T6)	0.25 A (T6)	-	48 V	YA6S/C-F-EN-SF-A-ST-00-00-00	225183	3.640
	0.28 A (T6)	0.28 A (T6)	-	24 V	YA6S/C-D-EN-SF-A-ST-00-00-00	225182	3.640
Rated operational voltage DC Rated operational voltage AC		3 Ex 1 Ex d IIC/IIB Tx Gb					
	Rated operational current	Rated operational current	Rated operational voltage AC	Rated operational voltage DC	Product Type	Art. No.	Weight kg
	0.28 A (T6)	0.28 A (T6)	-	24 V	YA6S/C-D-RU-SF-A-ST-00-00-00	256351	3.640

Additional gas groups and voltage variants are available; please use the selection table online at [r-stahl.com](http://r-stahl.com). WebCode YA6SA

Technical Data		
Variant	AC	DC
Explosion Protection		
Ambient temperature °C	-60 ... +60 °C	-60 ... +70 °C

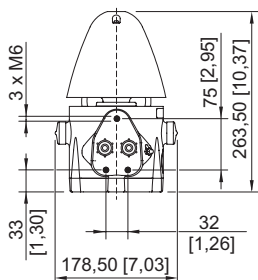
–!END!

Technical Data		
Variant	AC	DC
<b>Explosion Protection</b>		
IECEx gas explosion protection	Ex d IIC T6/T5 Gb	Ex d IIC T6 Gb
IECEx dust explosion protection	Ex tb IIIC T77 °C ... T87 °C Db	Ex tb IIIC T75 °C Db
ATEX gas explosion protection	Ⓜ II 2 G Ex d IIC T6/T5 Gb	Ⓜ II 2 G Ex d IIC T6 Gb
ATEX dust explosion protection	Ⓜ II 2 D Ex tb IIIC T77 °C ... T87 °C Db	Ⓜ II 2 D Ex tb IIIC T75 °C Db
Ambient temperature °C 2	-60 ... +70 °C	
IECEx gas explosion protection	Ex d IIC T5 Gb	
IECEx dust explosion protection 2	Ex tb IIIC T87 °C Db	
ATEX gas explosion protection	Ⓜ II 2 G Ex d IIC T5 Gb	
ATEX dust explosion protection 2	Ⓜ II 2 D Ex tb IIIC T87 °C Db	
<b>Electrical Data</b>		
Line monitoring	Yes	Yes
Tolerance	-10 – 10 %	-10 – 10 %
<b>Acoustic Data</b>		
Sound pressure level	max. 110 dB(A) @ 1 m	max. 110 dB(A) @ 1 m
Tone selection	Via DIL switch	Via DIL switch
Volume control	18 dB (A) adjustment	18 dB (A) adjustment
<b>Ambient Conditions</b>		
Ambient temperature	-60 °C ... +60 °C (T6) -60 °C ... +70 °C (T5)	-60 °C ... +70 °C (T6)
Operating temperature	-40 °C ... +60 °C	-60 °C ... +70 °C
<b>Mechanical Data</b>		
Degree of protection IP (IEC 60529)	IP66/IP67	IP66/IP67
Enclosure material	Polyester (GRP), Glass fibre reinforced	Polyester (GRP), Glass fibre reinforced
Trumpet material	ABS, flame retardant	ABS, flame retardant
Connection terminals solid max.	2.5 mm <sup>2</sup>	2.5 mm <sup>2</sup>
Connection terminals finely-stranded max.	2.5 mm <sup>2</sup>	2.5 mm <sup>2</sup>
Enclosure colour	Black	Black
<b>Mounting / Installation</b>		
Material mounting parts	Stainless steel	Stainless steel
Connection type	Screw terminal	Screw terminal
<b>Components</b>		
Drilled holes	2 x M20	2 x M20
Cable entries	Can be ordered as accessories	Can be ordered as accessories
Stopping plug	2 x dust cap	2 x dust cap
You can find more technical data online at <a href="http://r-stahl.com">r-stahl.com</a> . WebCode YA6SA		

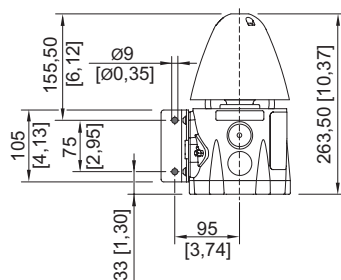
Accessories			
Figure	Description	Art. No.	Weight kg
<b>Fixed adaptor</b>			
	Adaptor plate for use in combination with pipe clamps	256519	0.630

Accessories			
Figure	Description	Art. No.	Weight kg
<b>Cable glands made of metal</b>			
	Ex d & Ex e Compound barrier cable gland for all types of armoured cables (SWA, braided, tape) (nickel plated brass)	109428 ▲	0.240
	RapidEx liquid pour sealing system Cable entry with compound CMP-20PX2K-REX KLE MsNi M20 for reinforced conductors	246649	0.240
	Ex d & Ex e Compound barrier cable gland for all types of unarmoured and braid armour cables (nickel plated brass)	109441 ▲	0.200
	RapidEx liquid pour sealing system Cable entry with compound CMP-20PXSS2K-REX KLE MsNi M20	246605	0.200
<b>Mounting accessories</b>			
	L-Bracket, long, stainless steel, (available for FL6S, FX15, YA60, YL6S)	247371	0.280
	Pipe clamp, R 1 1/2"	120819	0.470
	Pipe clamp, R 1 1/4"	120812	0.500
	Pipe clamp, R 2"	120823	0.500

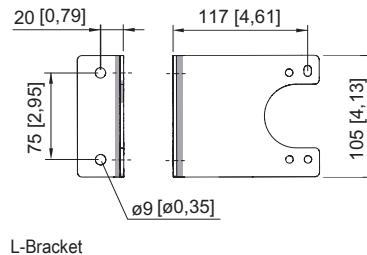
**Dimensional Drawings (All Dimensions in mm [inches]) – Subject to Alterations**



GRP Audible Signal Series YA6S without L-Bracket



GRP Audible Signal Series YA6S with L-Bracket



L-Bracket

