



- Advantageous LED technology: Extremely long service life, high luminance, low heat build-up
- For installation in enclosure walls, device covers, panels, control cabinets
- Version with spring clamp terminal with or without connection enclosure or version with prefabricated connection line and connection enclosure available

E4

WebCode 8013A



R. STAHL Series 8013 LED indicating lamps show command statuses via a light signal, the colour of which you can determine using the colour filter included in the delivery: Red, yellow, green, blue or white. The long-life LEDs provide high luminance and low heat build-up. Versions with spring clamp terminal with or without connection enclosure and versions with prefabricated connection line and connection enclosure are available.

	IECEX / ATEX					
Zone	0	1	2	20	21	22
Installation in		•	•	•	•	

	NEC 500 CEC Appendix J					
	Class I		Class II		Class III	
Division	1	2	1	2	1	2
Installation in		•				

	CEC Section 18					
	NEC® 505			NEC® 506		
	Class I					
Zone	0	1	2	20	21	22
Installation in		•	•			

Selection Table					
Product variant Certificates		Ex d e ATEX (PTB), Canada / USA (UL), EAC (ENDCE), IECEX (PTB), India (PESO)			
Connection	Conductor cross-section	Conductor length	Product Type	Art. No.	Weight kg
Connection cable plug connection	0.75 mm <sup>2</sup>	15 m	8013/313-al-15	216424	0.635
		3 m	8013/313-al-3	216425	0.635
		6 m	8013/313-al-6	214311 ▲	0.625
Spring terminal connection	0.75 – 1.5 mm <sup>2</sup>	–	8013/311-al	129095 ▲	0.130
Product variant Certificates		Ex i ATEX (PTB), Canada / USA (UL), EAC (ENDCE), IECEX (PTB), India (PESO)			
Connection	Conductor cross-section	Conductor length	Product Type	Art. No.	Weight kg
Connection cable plug connection	0.75 mm <sup>2</sup>	6 m	8013/323-al-6	214312	0.635
Spring terminal connection	0.75 – 1.5 mm <sup>2</sup>	–	8013/321-al	129110 ▲	0.140

The calotte insert caps red, yellow, green, blue, white are enclosed in the delivery.

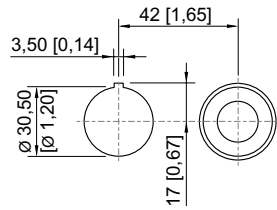
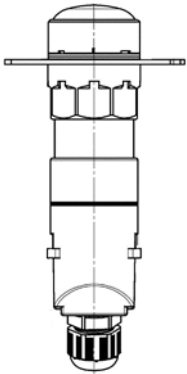
Technical Data		
Variant	Ex d e	Ex i
Explosion Protection		
IECEX gas explosion protection	Ex db eb mb IIC Gb	Ex db mb ia IIC Gb
IECEX dust explosion protection	Ex tb IIIC T80 °C Db	Ex tb IIIC T80 °C Db
ATEX gas explosion protection	Ⓜ II 2 G Ex db eb mb IIC Gb	Ⓜ II 2 G Ex db mb ia IIC Gb
ATEX dust explosion protection	Ⓜ II 2 D Ex tb IIIC T80 °C Db	Ⓜ II 2 D Ex tb IIIC T80 °C Db

Technical Data		
Variant	Ex d e	Ex i
Explosion Protection		
EAC gas explosion protection	Ex d e m IIC T6 X Ex ia IIC T6 X	Ex d e m IIC T6 X Ex ia IIC T6 X
EAC dust explosion protection	Ex tD A21 IP65 T80 °C	Ex tD A21 IP65 T80 °C
Notes	Product label may vary. Series devices have certification according to ATEX and IECEx.	
Electrical Data		
Rated operational voltage AC	12 – 254 V	10.8 – 28 V
Rated operational voltage DC	12 – 254 V	10.8 – 28 V
Ambient Conditions		
Ambient temperature	-30 °C ... +60 °C	-30 °C ... +60 °C
Lighting Data		
Luminous colour	Blue Green Red White Yellow	Blue Green Red White Yellow
Mechanical Data		
Degree of protection note	acc. to IEC/EN 60529	acc. to IEC/EN 60529
Silicone-free	Yes	Yes
Cable entry	M16 x 1,5 ( Ø2 ... 9 mm)	M16 x 1,5 ( Ø2 ... 9 mm)
Components		
Entry type	Standard 8161, moulded material	Standard 8161, moulded material

Spare Parts				
Figure	Description	Art. No.	Weight	kg
Insert cap				
	red	155842	0.003	
	yellow	155834	0.003	
	green	155852	0.003	
	blue	155860	0.003	
	white	155824	0.003	
Label mount				
	Label mount, size 1, without symbol label Text: 1 line for actuators to fit Ø 30.5 mm holes	155632	0.001	
	Label mount, size 2, without symbol label Text: 1 or 2 lines for actuators to fit Ø 30.5 mm holes	155687	0.002	
	Label mount, size 3, without symbol label Text: 1, 2 or 3 lines for actuators to fit Ø 30.5 mm holes	155844	0.002	
Closure part				
	for closing of unused mounting holes Ø 30.5 mm	155329	0.016	

Dimensional Drawings (All Dimensions in mm [inches]) – Subject to Alterations

E4



Drilling pattern: for aligning several devices  $\varnothing$  38 mm, in a panel

8013/3.1, 8013/3.3 Indicating lamp with terminal compartment