

# SHVSS-WM

CMP SHVSS-WM wall mounted single cable cleat is a composite cable cleat which has been designed and constructed in accordance with International Standard IEC 61914: Cable cleats for electrical installations, to ensure the securing and retention of cables, without sustaining damage to the cable(s).

The stainless steel section of this cable cleat can be optionally coated with an extremely high performance UL94 V0 flame retardant, halogen free, low smoke and fume, low toxicity polymer alloy coating. The coating makes the cleat resistant to impact, abrasion, salt spray, chemical attack, weathering and UV, and is perfectly suited for use in rail and tunnel applications.

The SHVSS-WM cable cleat is an extension of CMP's SHVSS (Single High Voltage Stainless Steel) Cable Cleat system. The system is designed to suit installations of high voltage cables in a vertical parallel formation, where the cable cleat will be mounted against a wall or a vertical support structure. The design incorporates a hinged side and a fixing side allowing for easier installations.

The robust base design of the cleat enables the cable to be installed within the cable cleat before the top part of the cleat is clamped down onto the cable. The fixing bolts can be captive within the assembly with an option of a single closing bolt if required.

This cable cleat is fabricated in non-magnetic 316L stainless steel, giving it high creep strength whilst providing excellent corrosion resistance in the harshest environments.

Low Smoke and Fume, Zero Halogen (LSFOH) fixed liners are standard, restraining the cables within vertical applications whilst providing a layer of protection for the cable sheath and the cable cleat during normal operation where thermal elongation of cable occurs. This also protects the cable from chafing on any mounting surface due to differential movements such as those found in marine and offshore applications.

The LSFOH liners also assist in the extra protection of cables in the event of short circuit fault conditions.

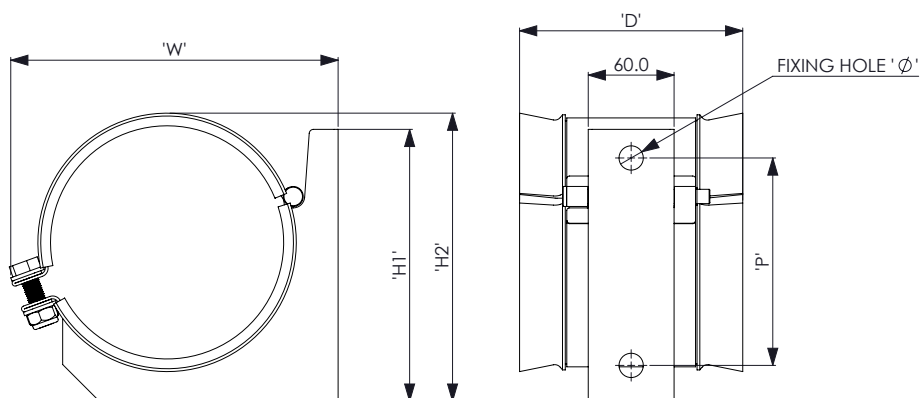


## FEATURES

- 316L stainless steel with polymer liner
- Operating temperature -50°C to +60°C or -58°F to +140°F
- Low Smoke and Fume Zero Halogen (LSFOH), Phosphorus-free liners

## TECHNICAL DATA & CLASSIFICATION

TYPE	SHVSS-WM - Single High Voltage Wall Mounted Cleat
DESIGN SPECIFICATION	IEC 61914:2015
TEMPERATURE FOR PERMANENT APPLICATION	-50°C to +60°C
NEEDLE FLAME TEST	Pass - 120 second flame application time
LATERAL LOAD TEST	Refer to CMP Products, IEC 61914 clause 9.3
IMPACT RESISTANCE	Pass - Very heavy
MATERIAL	316L Stainless Steel with optional Low Smoke and Fume Zero Halogen (LSFOH), Phosphorus-free



## CABLE CLEAT SELECTION TABLE

PART NO.	CABLE Ø (mm)		DIMENSIONS (mm)					WEIGHT (g)
	MIN Ø	MAX Ø	W	H	D	P	FIXING HOLE Ø	
SHVSS-WM-120130	120	130	200	180	177	156	135	1935
SHVSS-WM-130140	130	140	210	180	182	156	135	1996
SHVSS-WM-140150	140	150	220	190	197	156	145	2115
SHVSS-WM-150160	150	160	230	190	202	156	145	2174
SHVSS-WM-160170	160	170	240	200	217	156	155	2296
SHVSS-WM-170180	170	180	250	200	222	156	155	2355

*Dimensions are displayed in millimeters unless otherwise stated*