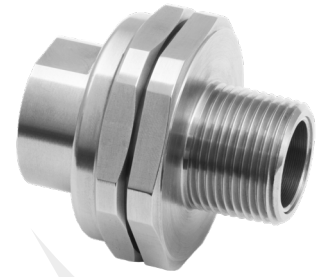


## 780

### 780 IN-LINE UNION, GLOBALLY APPROVED, EXPLOSIVE ATMOSPHERE CABLE / CONDUIT ACCESSORY

- Allows the connection of conduit or glands to equipment
- Suitable for rigid or flexible conduit
- Integral coupling eliminates the need to rotate the conduit
- General purpose / industrial version available
- Equipment interface 'O' ring seal available
- -60°C to 200°C
- Globally marked, UKEX, IECEx, ATEX & cCSAus



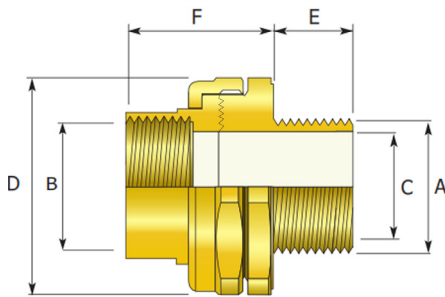
**IP66**  
+200°C  
↑  
-60°C

**Ex eb Ex db Ex ta**

#### TECHNICAL CLASSIFICATION

DESIGN SPECIFICATION	BS 6121:Part 1:1989
ENCLOSURE PROTECTION	IK10 to IEC 62262 (20 joules) Brass & Stainless Steel only
INGRESS PROTECTION RATING**	IP66
AVAILABLE MATERIALS	Brass (standard), Electroless Nickel Plated Brass, Aluminium, Stainless Steel

\*\* When CMP installation accessories are used. Refer to [www.cmp-products.com](http://www.cmp-products.com) for further information.



#### GLOBAL PRODUCT CERTIFICATION

ATEX CERTIFICATE	CML18ATEX1327X	IECEx CERTIFICATE	IECEx CML 18.0190X
UKEX CERTIFICATE	CML 21UKEX1240X		
CODE OF PROTECTION	⊕ II 2G 1D Ex db IIC Gb, Ex eb IIC Gb, Ex ta IIC Da ⊕ I M2 Ex db I Mb, Ex eb I Mb	CODE OF PROTECTION	Ex db IIC Gb, Ex eb IIC Gb, Ex ta IIC Da, Ex db I Mb, Ex eb I Mb
COMPLIANCE STANDARDS	EN 60079-0,1,7,31	COMPLIANCE STANDARDS	IEC 60079-0,1,7,31
cCSAus CERTIFICATE	1055233		
CODE OF PROTECTION	Class I, Div 1 & 2, Groups A,B,C,D; Enclosure type 4X: Class I, Zone 1, AEx de II; Ex de II		
COMPLIANCE STANDARDS	C22.2 No. 0,0,5,30,94, CAN/CSA 60079-0,1,7, CAN/CSA E61241-1-1, UL Std 50, 1203, UL 60079-0,1,7		
EAC CERTIFICATE	Check website for latest certificate number	UkrSEPRO CERTIFICATE	CLQ 19.0372X
CCC CERTIFICATE	2020322313003177	INMETRO APPROVAL	TUV 18.2088X
ECAS CERTIFICATE	20-02-05272	CCOE / PESO (INDIA) CERTIFICATE	P444949
SANS	IA MS-XPL21962 21.0303X		
MARINE APPROVALS	LRS: 01/00173		

Male-to-Male thread option available.

Available with an equipment interface 'O' ring seal. For such options please add the suffix letter 'R' after the type number in the ordering reference above, e.g. 780RDM2M2.

If 2 separate enclosures are required to be connected together please contact CMP Products.

#### PRODUCT SELECTION TABLE

ORDERING REFERENCE (BRASS, METRIC)	METRIC				ORDERING REFERENCE (BRASS, NPT)	NPT				MAX PROTRUSION LENGTH 'F'	ACROSS FLATS HEX 'D'	ACROSS CORNERS Ø 'D'
	MALE FORWARD THREAD SIZE 'A'	MINIMUM THREAD LENGTH 'E'	FEMALE REAR THREAD SIZE 'B'	BORE DIAMETER 'C'		MALE FORWARD NPT THREAD SIZE 'A'	MINIMUM NPT THREAD LENGTH 'E' (IN)	FEMALE REAR THREAD SIZE 'B'	BORE DIAMETER 'C'			
780DM2M2	M20 X 1.5	15.0	M20 X 1.5	14.3	780DT1T1	½"	0.79	½"	14.3	36.0	41.0	45.1
780DM3M3	M25 X 1.5	15.0	M25 X 1.5	20.1	780DT2T2	¾"	0.80	¾"	20.1	36.0	46.0	50.6
780DM4M4	M32 X 1.5	15.0	M32 X 1.5	26.4	780DT3T3	1"	0.98	1"	26.4	36.0	52.0	57.2
780DM5M5	M40 X 1.5	15.0	M40 X 1.5	32.6	780DT4T4	1¼"	1.01	1¼"	32.6	36.0	60.0	66.0
780DM6M6	M50 X 1.5	15.0	M50 X 1.5	44.2	780DT5T5	1½"	1.03	1½"	40.3	36.0	70.1	77.1
780DM7M7	M63 X 1.5	15.0	M63 X 1.5	56.1	780DT6T6	2"	1.06	2"	50.4	36.0	79.0	86.9
780DM8M8	M75 X 1.5	15.0	M75 X 1.5	68.1	780DT7T7	2½"	1.57	2½"	60.0	41.0	89.9	98.9
780DM9M9	M90 X 2.0	24.0	M90 X 2.0	80.1	780DT8T8	3"	1.63	3"	75.0	41.0	110.0	121.0

All dimensions shown are in millimetres unless otherwise stated

For material options please add the following suffix to the ordering reference; Brass (no suffix required), Nickel Plated Brass "5", 316 Grade Stainless Steel "4", Copper Free Aluminium "1"